



GENERAL PRICE LIST

Effective June 21, 2024; subject to change without notice

The goods and services shown here are those we can provide to our customers. You may choose only those items you desire. However, any funeral arrangements you select will include a charge for our basic services and overhead. If legal or other requirements mean you must buy any items you did not specifically ask for, we will explain the reason in writing on the statement we provide describing the funeral goods and services you selected.

BONNEY  WATSON

Washington Memorial

(206) 242-1787

16445 International Blvd.

SeaTac, WA 98188

BONNEY  WATSON

Federal Way

(253) 839-7317

1535 SW Dash Point Rd.

Federal Way, WA 98023

BONNEY WATSON HISTORY

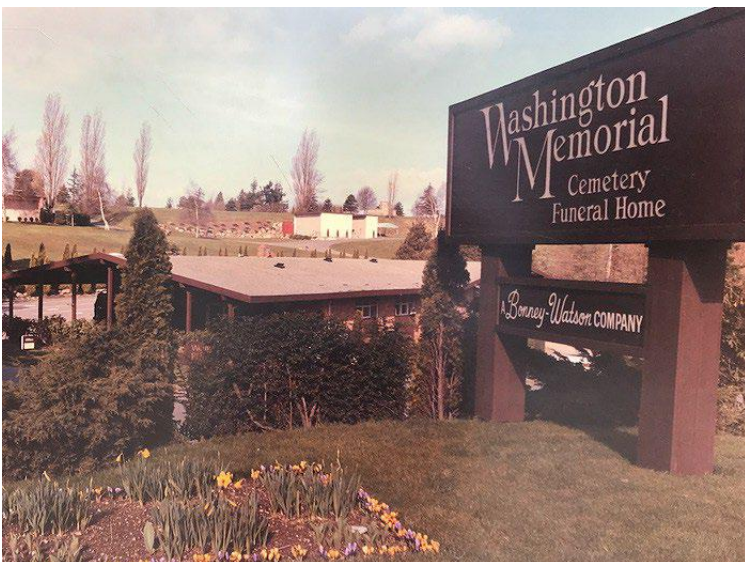
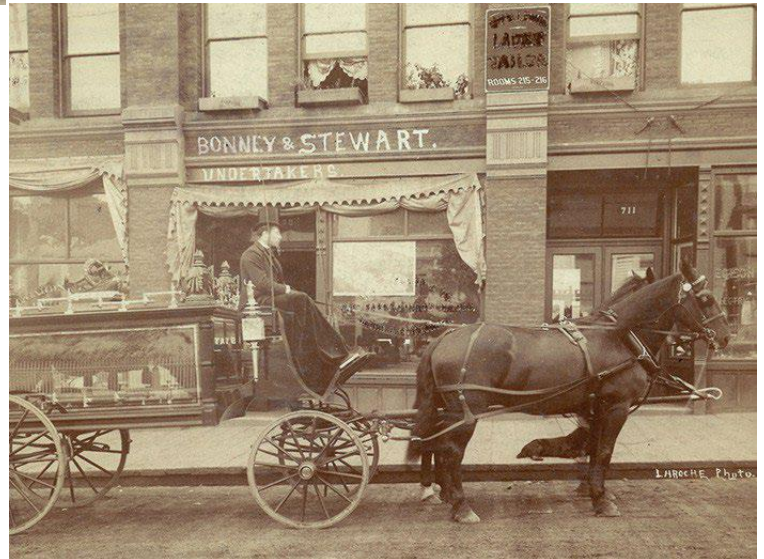


FOUNDERS

BONNEY WATSON's story began in 1861 when Oliver C. Shorey and his wife, Mary Emeline Bonney, moved to Seattle. At the time, there were only about 150 residents in Seattle.

SURVIVING THE GREAT SEATTLE FIRE

As Seattle's population grew, so did the need for caskets. In 1881, L.W. Bonney, a brother-in-law, joined the firm as a partner. The Shorey-Bonney name survived until 1889, the year of the Great Seattle Fire.



WASHINGTON MEMORIAL PARK

In 1978, BONNEY WATSON acquired Washington Memorial, a cemetery with a funeral home, located near Sea-Tac International Airport. Our flagship location offers families the convenience of having a funeral home, cemetery, and crematory at one location so your loved one never leaves our care.



OUR PROMISE



- BONNEY WATSON will do whatever it takes to serve your family in the most personal way possible. As a family-owned company, we have never been unable to serve a family due to limited resources. If for any reason we are unable to uphold this promise, we will take responsibility for finding someone who can.



PROFESSIONAL SERVICES

BASIC SERVICES OF FUNERAL DIRECTOR AND STAFF \$2,195.00

Includes but is not limited to: consultation with family and clergy; preparation and filing of necessary notices; sheltering of the remains; basic overhead and operating expenses; authorizations; consents and other services. Also includes attendance prior to and following the funeral, including coordination with those providing other portions of the funeral, such as cemetery, crematory, transportation and others. This fee for our basic services and overhead will be added to the total cost of the funeral arrangements you select. This fee is already included in our charges for direct cremation, immediate burial, and forwarding or receiving remains.

EMBALMING \$875.00

Embalming is not required by law. Embalming may be necessary, however, if you select certain funeral arrangements such as a funeral with viewing. If you do not want embalming, you usually have the right to choose an arrangement that does not require you to pay for it, such as direct cremation or immediate burial. Some cemeteries, including Washington Memorial Park, require embalming when placing remains in a mausoleum.

LIMITED PREPARATION FOR VIEWING UN-EMBALMED REMAINS \$455.00

Includes staff services to wash, disinfect and set the features of the deceased prior to viewing. Fee also includes the use of a visitation room for a period not to exceed 1 hour.

OTHER PREPARATION OF THE DECEASED \$385.00

Covers cost of other preparations of the body or special care of autopsied remains such as applying cosmetics, dressing and placing the deceased in the casket. Use of a visitation room is not included in this charge.

HAIR DRESSING \$95.00

MAILING OF CERTIFIED COPIES OF DEATH CERTIFICATE

	1-5: \$15.00
	6-10: \$20.00
	OVER 10: \$25.00

SHELTER OF REMAINS WHEN EMBALMING IS NOT AUTHORIZED \$875.00

Up to seven (7) days of shelter is included in the Basic Services and Staff. If the disposition has not taken place within seven (7) days, there will be an additional charge for up to ten (10) additional days thereafter.



FACILITIES, STAFF & ADDITIONAL SERVICES

FACILITIES AND STAFF FOR EVENTS AT A BONNEY WATSON FACILITY:

Viewing – 3 hours maximum	
Sunday – Thursday	\$465.00
Friday – Saturday	\$635.00
Funeral Ceremony, Memorial Service, or Reception only	\$875.00
Monday-Thursday, 10:00 am to 4:00 pm	
Up to 3 hours, \$325.00 each additional hour	
Friday / Saturday / Sunday <i>(in addition to the cost of activity)</i>	\$585.00
Holiday Activity <i>(in addition to the cost of activity)</i>	\$1,295.00
Evening Activity - Overnight Activity 4 PM - 8 AM	\$1,695.00
Evening Activity - After 4 PM <i>(if this is a secondary service)</i>	\$585.00
Reception <i>(if this is a secondary service, up to 2 additional hours)</i>	\$555.00
Reception <i>(use of reception room only, concurrent with chapel)</i>	\$315.00
Graveside Service <i>(if this is the only service)</i>	\$525.00
Monday – Thursday, 10:00 am to 3:00 pm	
Graveside Service <i>(if this is a secondary service)</i>	\$365.00
CHAPEL RENTAL	\$1,765.00

Facilities charge for a funeral or memorial service or reception only in a BONNEY WATSON chapel for up to 3 hours when another funeral home handles the basic arrangements; includes basic services of funeral director and staff. Does not include the cost of outside items such as clergy and musician honorariums, or Friday / Saturday / Sunday, Evening, and/or Holiday fees.

ADDITIONAL SERVICES

Hourly Rate for meeting with a Funeral Director	\$175.00
Arrangement conference or any funeral-related activity that requires the use of a Funeral Director.	PER HOUR
Use of equipment and staff for a Ceremony at another local site	\$875.00
Includes two directors for up to three hours; any fees associated with the rental of an outside venue would be additional; Friday / Saturday / Sunday, holiday, and/or after hour fees will be added if applicable.	
Limited use of equipment and staff for a Memorial Service at another local site	\$345.00
Includes one director for up to three hours; any fees associated with the rental of an outside venue would be additional; Friday / Saturday / Sunday, holiday, and/or after-hour fees will be added if applicable.	



TRANSPORTATION

Unless otherwise noted, all transportation charges contained in this General Price List apply to a 30-mile radius. The charge for additional mileage is \$3.75 per mile (one-way); additional time is \$155 per hour.

TRANSFER OF THE DECEASED TO THE FUNERAL HOME **\$635.00**

There is no additional fee for after-hour transfer of the deceased, including the use of additional staff.

USE OF HEARSE **\$625.00**

Includes the use of a hearse and driver for a four-hour time period.

USE OF FLOWER VEHICLE **\$195.00**

Includes the use of a flower vehicle and driver for a four-hour time period.

PER VEHICLE

USE OF A UTILITY VEHICLE **\$195.00**

Includes the use of a utility vehicle and driver for a one-hour time period when a hearse is not required.

PER VEHICLE

USE OF A HORSE DRAWN HEARSE **\$1,495.00**

Includes driver and horse for a four-hour time period. Offsite locations quoted at individual rates

IMMEDIATE BURIAL **\$3,395.00 - \$35,880.00**

Covers cost for immediate burial, including Transfer of the deceased to the funeral home, Basic Services of Funeral Director and Staff, and Use of hearse. This charge does not include the use of staff and facilities for any public or private visitation or ceremony.

Immediate burial with casket provided by purchaser **\$3,395.00**

Immediate burial with casket selected from Bonney Watson (excludes cost of casket) **\$3,395.00**

Caskets **\$1,660.00 - \$32,485.00**



DIRECT CREMATION

\$2,795.00 - \$8,885.00

If you want to arrange a direct cremation, you can use an alternative container. Alternative containers encase the body and can be made of materials like fiberboard or composition materials (with or without an outside covering). The containers we provide are composition containers.

Covers cost for a direct cremation, including the Transfer of the deceased to the funeral home, Basic Services of Funeral Director and Staff, and Cremation and Processing. This charge does not include the use of staff and facilities for any public or private visitation or ceremony.

Direct cremation with an Alternative Container provided by purchaser	\$2,795.00
Direct cremation with Alternative Container (<i>Minimum Cardboard</i>)	\$3,000.00
Direct cremation with Alternative Container (<i>Trayview</i>)	\$3,395.00
Direct cremation with Alternative Container (<i>Standard Brown</i>)	\$3,645.00
Direct cremation with Alternative Container selected from BONNEY WATSON (<i>excludes cost of container</i>)	\$2,795.00
Cremation containers	\$205.00 - \$6,090.00
Cremation & Processing (<i>this fee is already included in the five direct cremation options listed above</i>)	\$365.00
Mailing of cremated human remains <i>Mailing fee includes packaging, preparation of postal forms and mailing fees within the continental United States.</i>	\$175.00
Use of staff and vehicle for delivery of cremated remains to local facility	\$235.00
Use of facilities and staff for family to witness cremation	\$345.00
Additional charge to expedite cremation (<i>within 72 hours of the submittal of the completed paperwork</i>)	\$545.00
Other preparation of the body prior to cremation	\$385.00
Removal and release of Cremated Human Remains from storage (<i>after 90 days</i>)	\$395.00
Transfer of cremated remains to keepsakes (<i>Up to 4 included, then \$10 for each additional one</i>)	\$10 per additional keepsake



FORWARDING & RECEIVING OF REMAINS

FORWARDING OF REMAINS TO ANOTHER FUNERAL HOME \$3,495.00

This charge includes the Basic Services of Funeral Director and Staff, Transfer of the deceased to the funeral home, Embalming, and the Use of a utility vehicle to transport deceased to the local airport or rail station. This charge does not include the use of staff and facilities for any public or private visitation or ceremony.

SHIPPING CONTAINERS

Combination shipping container \$425.00

Outside Receptacle (*Air Tray, excludes cost of casket*) \$325.00

International processing fee (*Includes up to 6 hours of Funeral Director labor*) \$1,295.00

RECEIVING OF REMAINS FROM ANOTHER FUNERAL HOME \$2,695.00

This charge includes the Basic Services of Funeral Director and Staff and Use of hearse. This charge does not include the use of staff and facilities for any public or private visitation or ceremony.

ALTERNATIVE METHODS OF DISPOSITION

AQUAMATION (Alkaline Hydrolysis) \$3,720.00

This package includes the Basic Services of Funeral Director and Staff, Transfer of the deceased to the funeral home, Alkaline Hydrolysis through a third-party, and Use of a utility vehicle. This charge does not include the use of staff and facilities for any public or private visitation or ceremony.

TERRAMATION (Natural Organic Reduction) \$7,210.00

This charge includes the Basic Services of Funeral Director and Staff, Transfer of the deceased to the funeral home, Natural Organic Reduction through a third-party, and Use of a utility vehicle. This charge does not include the use of staff and facilities for any public or private visitation or ceremony.

ADDITIONAL OPTIONS \$500.00

Laying in Ceremony

This charge includes a Video Tribute, Live Webcast of Ceremony, and two hours' Use of Return Home Facility and Staff for ceremony and in-person goodbye.



MERCHANDISE

A complete list of caskets, cremation containers, outer burial containers, and urns is available at BONNEY WATSON. Selection is subject to individual cemetery requirements. In addition to the items listed, BONNEY WATSON offers other merchandise to help you commemorate the life of your loved one. Additional information on pricing and options will be made available at the time of arrangements. Tax will be added where applicable.

CASKETS

\$1,660.00 TO \$32,485.00

A complete price list will be provided at the funeral home

CREMATION CONTAINERS

\$205.00 TO \$6,090.00

A complete price list will be provided at the funeral home

OUTER BURIAL CONTAINERS

\$2,195.00 TO \$28,395.00

A complete price list will be provided at the funeral home

URNS (must be purchased or provided prior to cremation)

\$135.00 TO \$2,415.00

A complete price list will be provided at the funeral home

MEMORIAL PACKAGES

\$195.00 TO \$875.00

A complete price list including a la carte items will be provided at the funeral home





CHILD AND INFANT OFFERINGS

We want to provide quality services at a charitable rate for families who experience the death of an infant or child.

- Items in this General Price List will be discounted by 50% for services for children age two to 18 years.
- Fees will be reduced by 80% for services for infants less than two years of age.



LAW ENFORCEMENT & FIREFIGHTERS DISCOUNT

In recognition of their faithful service protecting the safety and well-being of our communities, for any law enforcement officer or firefighter killed in the line of duty, BONNEY WATSON will provide all of our usual and customary professional service fees at no cost. We will also provide any casket, cremation container, and/or urn from our standard line at no cost. We will also provide a basic right of interment, cemetery service fees, and cemetery vault at Washington Memorial Park at no cost.

For any active duty or retired law enforcement officer or firefighter or their immediate dependent family member, we will provide all of our usual and customary professional service fees at a discount of 50%, and our basic casket/cremation container/urn will be provided at no charge.



CLERGY DISCOUNT

In recognition of their faithful service to their religious tradition, for any active clergy or chaplain who dies, BONNEY WATSON will provide all of our usual and customary professional service fees at a discount of 50%, and our basic casket/cremation container/urn will be provided at no charge.

For any retired clergy or chaplain who dies, we will provide all of our usual and customary professional service fees at a discount of 25%, and our basic casket/cremation container/urn will be provided at no charge.

To qualify, the person must be an ordained clergy or chaplain and work for or be retired from a recognized church, synagogue, or institution in our service area.



MORTUARY PRICE PLANS



BONNEY WATSON is committed to providing every family with services and memorial items that are both meaningful and of value. We believe a life uniquely lived deserves to be uniquely honored, celebrated and remembered. We believe in providing exceptional care and creating meaningful experiences infused with the traditions, customs, achievements and memories of your loved one.

To help make funeral planning easier for you, we offer mortuary price plans that:

- Provide you with a wide range of selections, options and prices.
- Provide you with more time to create a service that will celebrate the life of the person you are honoring.
- Provide you with convenient discounts off of our usual and customary charges.

These price plans are appropriate for burial, entombment, or cremation. However, if you prefer, you may choose individual items listed on this General Price List.

We appreciate the trust you have placed in us to assist with your arrangements, and we are committed to providing you with exceptional service and value, regardless of the choices you make.



TRADITIONAL BURIAL PRICE PLANS

VIEWING AND FUNERAL PLAN

This plan includes the following goods and services:

• Basic services of funeral director and staff	\$2,195.00
• Embalming	\$875.00
• Other preparation of the deceased (includes hair dressing if applicable)	\$385.00
• Use of facilities and staff for a viewing Sunday-Thursday for up to three hours (Friday / Saturday fees not included)	\$465.00
• Use of equipment, staff, and/or facilities for a ceremony (Friday / Saturday / Sunday, holiday, or evening fees not included)	\$875.00
• Graveside service at a local cemetery	\$365.00
• Transfer of the deceased to the funeral home	\$635.00
• Use of hearse	\$625.00
• Use of utility vehicle	\$195.00
• Simply Treasured Memorial Package	\$295.00
• Flower allowance	\$250.00

SUB TOTAL \$7,160.00

SERVICE SAVINGS **(\$665.00)**

PLAN PRICE WITH SAVINGS **\$6,495.00**

**Please note – (A) To be eligible for this plan, the casket must be purchased from BONNEY WATSON'S Casket Price List. (B) Because the plan includes a courtesy discount of \$665.00 OFF our usual charges: no deletions will be allowed. Sales tax will be added to all merchandise items.*



GRAVESIDE SERVICE PLAN

This plan includes the following goods and services:

• Basic services of funeral director and staff	\$2,195.00
• Other preparation of the deceased	\$385.00
• Graveside service (Friday/Saturday/Sunday, holiday, or evening fees not included)	\$525.00
• Transfer of the deceased to the funeral home	\$635.00
• Use of hearse	\$625.00
• Use of utility vehicle	\$195.00
• Flower allowance	\$150.00
SUB TOTAL	\$4,710.00
SERVICE SAVINGS	(\$455.00)
PLAN PRICE WITH SAVINGS	\$4,255.00

**Please note- (A) To be eligible for this plan, the casket must be purchased from BONNEY WATSON'S Casket Price List. (B) Because this plan includes a courtesy discount of \$455.00 OFF our usual and customary charges: no deletions will be allowed. Sales tax will be added to all merchandise items*

BASIC BURIAL WITH NO SERVICE PLAN

This plan includes the following goods and services:

• Basic services of funeral director and staff	\$2,195.00
• Other preparation of the deceased	\$385.00
• Transfer of the deceased to the funeral home	\$635.00
• Use of hearse for delivery of the casketed remains to a local cemetery for placement at our convenience	\$625.00
SUB TOTAL	\$3,840.00
SERVICE SAVINGS	(\$295.00)
PLAN PRICE WITH SAVINGS	\$3,545.00

**Please note - (A) To be eligible for this plan, the casket must be purchased from BONNEY WATSON'S Casket Price List. (B) Because this plan includes a courtesy discount of \$295.00 OFF our usual and customary charges: no deletions will be allowed Sales tax will be added to all merchandise items.*



TRADITIONAL CREMATION PRICE PLANS

VIEWING AND FUNERAL CREMATION PLAN

This plan includes the following goods and services:

• Basic services of funeral director and staff	\$2,195.00
• Embalming	\$875.00
• Other preparation of the deceased (includes hair dressing if applicable)	\$385.00
• Use of facilities and staff for a viewing Sunday-Thursday for up to three hours (Friday / Saturday fees not included)	\$465.00
• Use of equipment, staff, and/or facilities for a ceremony (Friday / Saturday / Sunday, holiday, or evening fees not included)	\$875.00
• Cremation & Processing	\$365.00
• Transfer of the deceased to the funeral home	\$635.00
• Simply Treasured Memorial Package	\$295.00
• Flower allowance	\$250.00
• Urn Allowance	\$265.00

SUB TOTAL	\$6,605.00
SERVICE SAVINGS	(\$585.00)
PLAN PRICE WITH SAVINGS	\$6,020.00

**Please note – (A) To be eligible for this plan, the cremation container must be purchased from BONNEY WATSON. (B) Because this plan includes a courtesy discount of \$585.00 OFF our usual and customary charges: no deletions will be allowed. Sales tax will be added to all merchandise items.*



MEMORIAL SERVICE CREMATION PLAN

This plan includes the following goods and services:

• Basic services of funeral director and staff	\$2,195.00
• Use of equipment, staff, and/or facilities for a ceremony (Friday / Saturday / Sunday, holiday, or evening fees not included)	\$875.00
• Cremation & Processing	\$365.00
• Transfer of the deceased to the funeral home	\$635.00
• Simply Treasured Memorial Package	\$295.00
• Flower allowance	\$150.00
• Urn Allowance	\$265.00

SUB TOTAL	\$4,780.00
SERVICE SAVINGS	(\$415.00)
PLAN PRICE WITH SAVINGS	\$4,365.00

**Please note – (A) To be eligible for this plan, the cremation container must be purchased from BONNEY WATSON. (B) Because this plan includes a courtesy discount of \$415.00 OFF our usual and customary charges: no deletions will be allowed. Sales tax will be added to all merchandise items.*

BASIC CREMATION WITH IDENTIFICATION VIEWING PLAN

This plan includes the following goods and services

• Basic services of funeral director and staff	\$2,195.00
• Limited Preparation for Un-Embalmed Remains	\$455.00
• Cremation & Processing	\$365.00
• Transfer of the deceased to the funeral home	\$635.00
• Urn Allowance	\$265.00

SUB TOTAL	\$3,915.00
SERVICE SAVINGS	\$325.00
PLAN PRICE WITH SAVINGS	\$3,590.00

**Please note – (A) To be eligible for this plan, the cremation container must be purchased from BONNEY WATSON. (B) Because this plan includes a courtesy discount of \$325.00 OFF our usual and customary charges: no deletions will be allowed. Sales tax will be added to all merchandise items.*



UNIQUE OFFERINGS



HORSE-DRAWN HEARSE

This 1840 style Carriage is in perfect condition and has glass panels on all sides. The Carriage is built to accommodate urns and caskets for any type of funeral ceremony.



OFFSITE VENUES

There are many unique locations available to hold your loved one's funeral service. We work with many different venues in the greater Puget Sound area. Let us help you find and coordinate the perfect venue to help celebrate your loved one.





BONNEY  **WATSON**

Washington Memorial

(206) 242-1787

16445 International Blvd.

SeaTac, WA 98188

BONNEY  **WATSON**

Federal Way

(253) 839-7317

1535 SW Dash Point Rd.

Federal Way, WA 98023

The goods and services shown here are those we can provide to our customers. You may choose only those items you desire. However, any funeral arrangements you select will include a charge for our basic services and overhead. If legal or other requirements mean you must buy any items you did not specifically ask for, we will explain the reason in writing on the statement we provide describing the funeral goods and services you selected.